

PowerPort Series PPDC

The Portable Power Distribution Center (PPDC) provides safe convenient, secondary power distribution at low cost for all types of temporary or fast turn-around situations in industrial plants and construction projects. With a PPDC unit, there is no need for expensive, time consuming switch rack construction at each new job site. When the project is complete, simply move the PPDC to your next project site and be up and running immediately. The unit is available in three styles and in capacities up to 600A, 3 Φ , 480 Volt input. Outputs can include 480V, 240V, 208V and 120V branch circuits in any combination with the 480V circuits. Internally, safety barriers prevent accidental contact with hot circuits.



The PPDC meets all applicable OSHA and NEC requirements. The unit's unique features include a slanted top in order to shed rain rather than collect it, and also to keep craft personnel from using the unit as a work bench. Weatherproof construction allows for outdoor service and cable strain relief, and the unit is equipped with gravity closed covers in order to prevent accidental exposure to construction debris and weather. The twelve gauge steel exterior is finished with a high-visibility yellow powder coat to withstand the toughest of on-site conditions. This unit is also easily transported by crane-lift or truck.

We will custom tailor a PPDC to your requirements for type and numbers of receptacles, as well as circuit breaker ratings and transformer size. Simply complete and submit a PPDC Design Guide and we will take care of the rest.

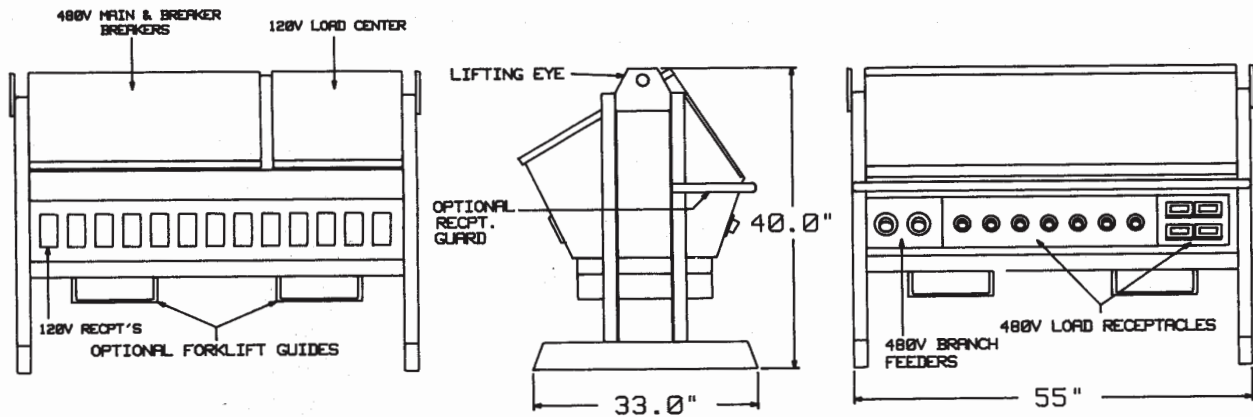


302.738.0500
www.mdavisinc.com

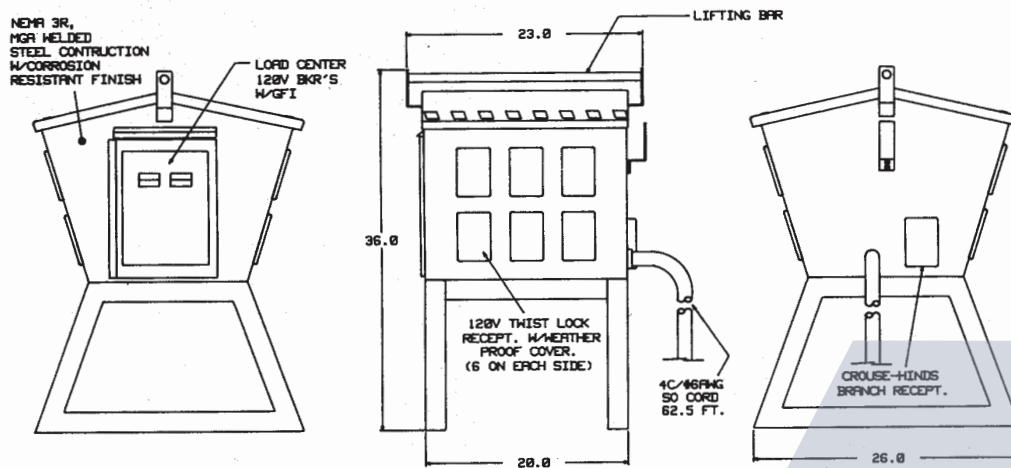


PowerPort Series PPDC

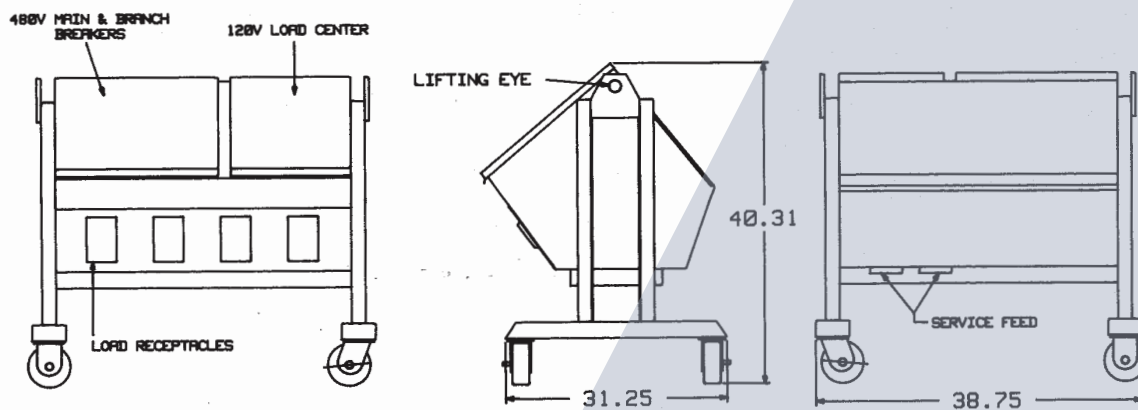
BCK Series



KSH-Style A Series



KSH-Style B Series



PowerPort Series PPDC

Submitted By: _____

Dated: _____

Model No.: _____

Company: _____ Street Address: _____

City, State & Zip: _____ Telephone No.: (____) _____

Person Requesting Information: _____ Title: _____

☐ BCK Series

☐ KSH-Style A Series

☐ KSH-Style B Series

Incoming Power: _____ Amps, _____ Volts, _____ Phase, _____ Hz. Cable Size: _____

Main Breaker Rating: _____ Amps, _____ Poles, _____ Volts

480 Volt Branch Circuits				Breaker Ratings			Receptacles*		
Qty	Amps	No. Phases	No. Wires	Amps	No. Poles	Volts	Manufacturer	Catalog No.	NEC Configuration

208-240 Volt Branch Circuits				Breaker Ratings			Receptacles*		
Qty	Amps	No. Phases	No. Wires	Amps	No. Poles	G.F.I.	Manufacturer	Catalog No.	NEC Configuration
						yes / no			
						yes / no			
						yes / no			

480 Volt Branch Circuits				Breaker Ratings			Receptacles*		
Qty	Amps	No. Phases	No. Wires	Amps	No. Poles	G.F.I.	Manufacturer	Catalog No.	NEC Configuration
						yes / no			
						yes / no			
						yes / no			

Transformer:

_____ KVA, _____ Phase, _____ Primary Voltage, _____ Secondary Voltage

Options:

1. Mating Plugs: _____ (Yes) _____ (No)

Qty: _____ Volt _____ Amp; _____ Manufacturer: _____ Catalog No. _____

Qty: _____ Volt _____ Amp; _____ Manufacturer: _____ Catalog No. _____

Qty: _____ Volt _____ Amp; _____ Manufacturer: _____ Catalog No. _____

2. Receptacle Guards: _____ (Yes) _____ (No)

3. Fork Lift Stabilizers: _____ (Yes) _____ (No)

4. Caster Wheels: _____ (Yes) _____ (No)

* Standard Receptacles are:

480V, 50 amp, 3 pole, 4 wire; Hubbell #3769. 208-240V, 20 amp, 2 pole, 3 wire; Hubbell #2320 or 30 amp, Hubbell #2620. 120V, 20 amp, 1 pole, 3 wire; Hubbell #2310 or 30 amp, Hubbell #2610. If other receptacles are desired, please specify manufacturer, catalog number and/or NEC configuration.



302.738.0500
www.mdavisinc.com



PowerPort Series PPDC

BCK-644P463029S16223/43

BCK-444P4620S16223/43

○ SYMBOL INDICATES TERMINAL BLOCKS

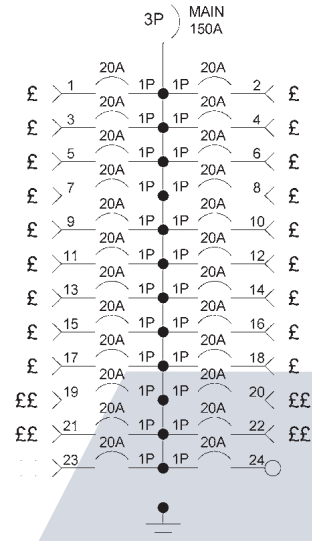
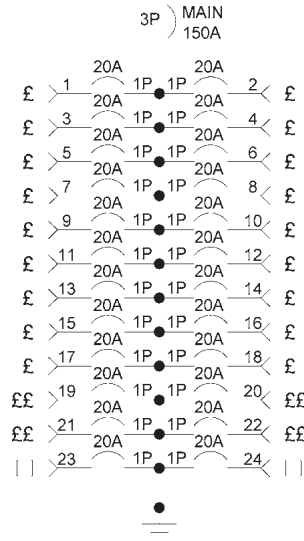
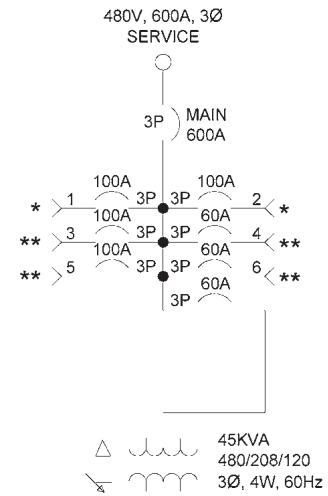
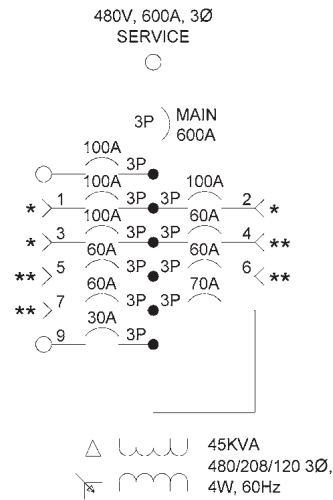
* CROUSE HINDS AR-1042
600V, 100A, 3W, 4P RECEPTACLE

** CROUSE-HINDS AR-642
600V, 100A, 3W, 4P RECEPTACLE

£ HUBBELL 2310A (L5-20R)
120V, 20A, 3W
TWIST-LOCK RECEPTACLES

££ HUBBELL 3769, 3P, 4W
TWIST-LOCK RECEPTACLE

ALL RECEPTACLE CIRCUITS PROTECTED
BY 120V, 20A, GFI BREAKERS

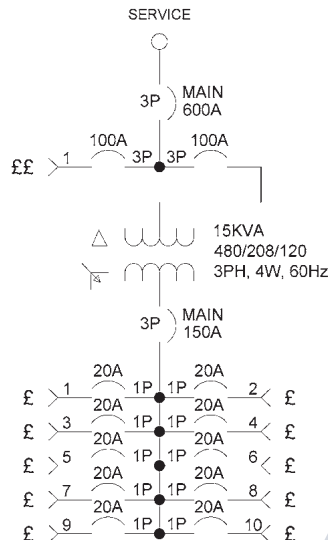


KSH-STYLE B
KSHB-141P16S102

££ HUBBELL 3769, 3P, 4W
TWIST-LOCK RECEPTACLE

£ HUBBELL 2310A
TWIST-LOCK RECEPTACLES
NEMA L5-20R

ALL RECEPTACLE CIRCUITS
PROTECTED BY 120V,
20A GFI BREAKERS



KSH-STYLE A
KSHA-010P16S122

** CROUSE-HINDS APJ6485 PLUG

£ HUBBELL 2310A
TWIST-LOCK RECEPTACLES
NEMA L5-20R

ALL BREAKERS -
120V, 20A, GFI

* CROUSE-HINDS AR642
3W, 4P, 60A, 600VAC
RECEPTACLE

