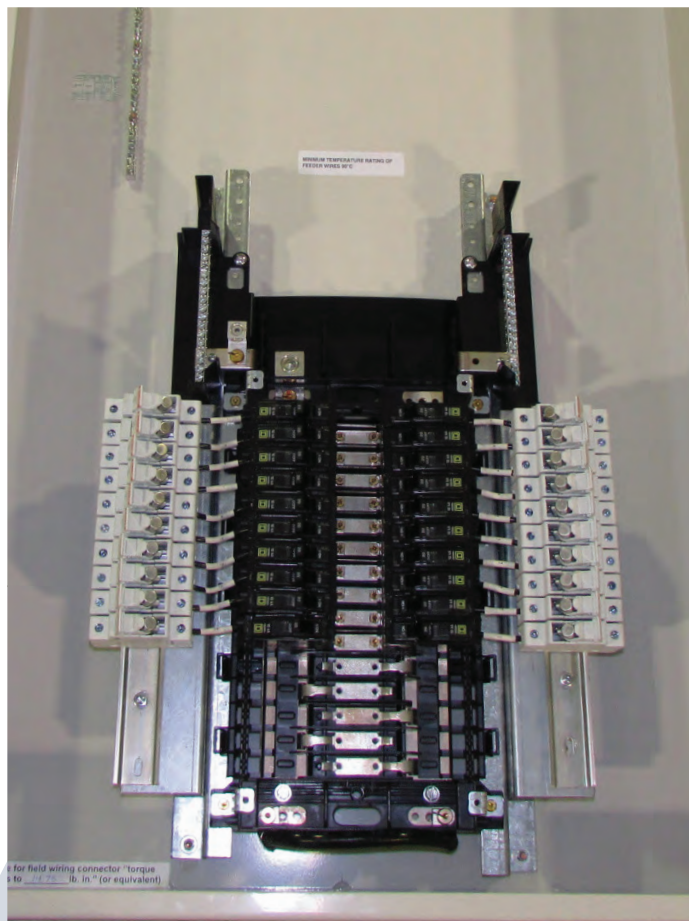


Fused Distribution Panelboard

The Fused Distribution Panelboard (FDP) is designed to provide high speed fused electrical power distribution for applications requiring high speed clearing of faults from the supply source. Fused Distribution Panels are available for single phase, 2 and 3 wire systems and three phase, and 4 wire systems. They can accommodate single, double, and three pole branch circuits as required with a maximum of 42 single pole circuits per panel.

The FDP's are supplied with UL or Canadian UL labels. They are engineered, fabricated, factory assembled and tested for shipment to the customer's site for easy installation. The result is a complete Fused Distribution Panel package that meets NEC and OSHA requirements.

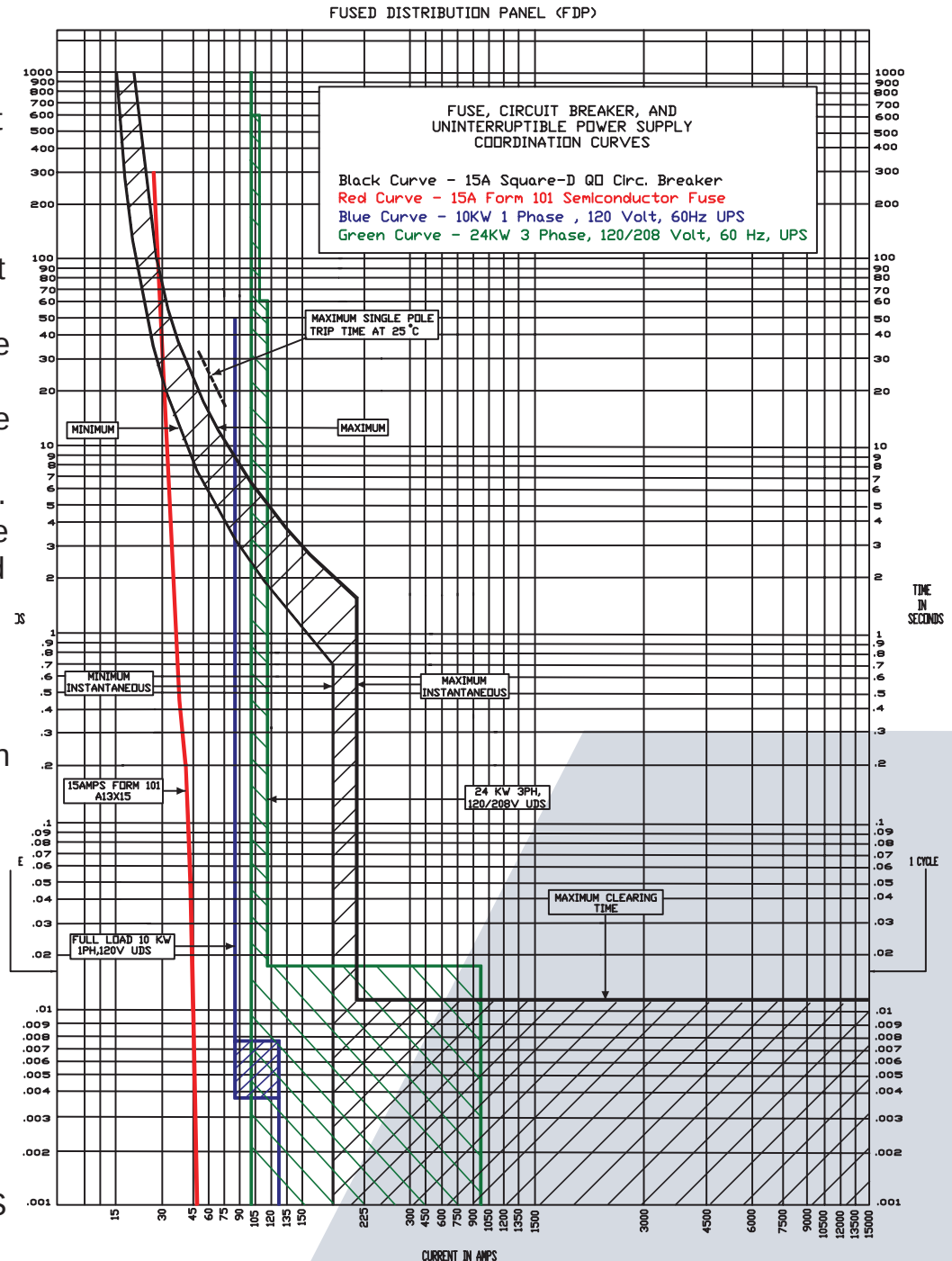


www.mdavisinc.com



Fused Distribution Panelboard

Using a panelboard with standard branch circuit breakers will not provide the necessary coordination with the UPS system. Thermal magnetic circuit breakers are too slow to coordinate with the automatic transfer bypass circuit in a UPS. Therefore, during a branch circuit fault, the UPS transfers back to the utility power source to provide power of a sufficient magnitude to trip the circuit breaker. After the fault is cleared, the UPS transfers back to the UPS output. The transfer takes place because the UPS has limited capacity and cannot produce enough short circuit current to cause an ordinary branch circuit breaker to reach it's instantaneous trip level. See the typical coordination curves on the right. On occasion you can drop the load during the transfer cycle or in a worse case, have the UPS transfer to the utility power source that is not there. The solution to the potential problem is to incorporate the Fused Distribution Panel into your system with semi-conductor protection type fuses that are designed to clear before the UPS has to transfer.



www.mdavisinc.com



Fused Distribution Panelboard

Ordering Information

FDP- MB 60* - 3 208 - 42 / OPTIONS

FD	Fused Main Breaker
MB	Main Circuit Breaker
MLO	Main Lug Only

* Main Breaker May Be Changed As Needed . Values Shown are Maximum Based on Bus Ratings

1 Φ	100 Amp*
	150 Amp*
	225 Amp*
3 Φ	100 Amp*
	150 Amp*
	225 Amp*

1 Φ	120	Volt 2 Wire
1 Φ	240	Volt 3 Wire
3 Φ	208	Volt 4 Wire

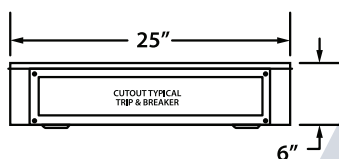
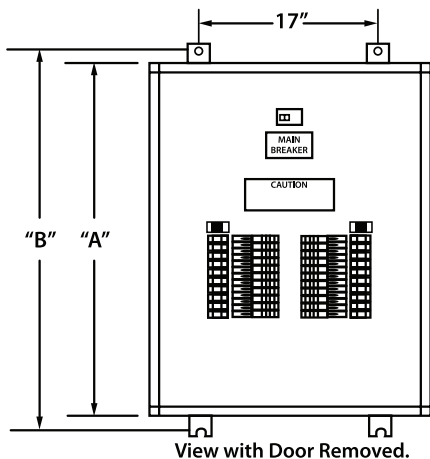
1 Φ	18	Circuit
	30	Circuit
	42	Circuit
3 Φ	18	Circuit
	30	Circuit
	42	Circuit

See List of Options Below, Add as Many As Required

Optional Suffixes: Add multiple suffixes as required

BFI	Blown Fuse Indicators	CP	Copper Panelboard Bus
BON	Bolt-On Branch Circuit Breakers	3R	NEMA 3R Weather Proof Enclosure
ACU	All Copper Bus, Lugs & Neutral	4X	NEMA 4 Stainless Steel Enclosure
PDL	Square D Circuit Breaker Handle Padlock Attachment	4X-ZP	NEMA 4 SST with Type Z Purge for Div 2 Areas
GBCU	Copper Ground Bus	NEMA12	NEMA 12 Enclosure
IGB	Isolated Aluminum Ground Bus	BE	Provisions for Bottom Entry
IGBCU	Isolated Copper Ground Bus		

Note: Provide a panel schedule to specify the Ampere Rating and the Number of Circuit Breakers and Fuses. If one is not available go to VTI's web site (www.vt-inc.com/products/fdp) and download a panel schedule



Phase Φ	Voltage	QTY of Poles	M. Breaker or fuse size	Dimensions		Approx. Weights
				"A"	"B"	
1	240/120	18	60amp	32"	34.5"	90 lbs
1	240/120	30	150amp	42"	44.5"	110 lbs
1	240/120	42	225amp	42"	44.5"	110 lbs
3	208/120	18	60amp	32"	34.5"	90 lbs
3	208/120	30	100amp	42"	44.5"	110 lbs
3	208/120	42	150amp	42"	44.5"	110 lbs
3	208/120	42	225amp	42"	44.5"	115 lbs



www.mdavisinc.com



Fused Distribution Panelboard

STANDARD FEATURES

- Welded 14 Gauge Steel Construction
- Up to 42 Branch Circuit Distribution Panels
- Removable Dead Front Trim Panel
- Hinged Front Door
- Quarter-Turn Front Door Latches
- Available with Plug-On or Bolt-On Breakers
- Factory Wired, QC Inspected and Tested
- 30-Amp 600-Volt Fuse Holders for NEC Midget Fuses (1-1/2 Lg. x 13/32 Dia.)
- Fuse Sizes available from 0.1 to 30 Amps
- Extra Large Field Wiring Gutters
- Removable Covers on the Top & Bottom for Load Connections
- Enclosure finished with Cirrus Gray Powder Coating



www.mdavisinc.com

